



*Hardware
Software
Design
Engineering*

CHESHIRE ENGINEERING CORPORATION



*HDTV Video Processing System
designed by Cheshire (incorporating
2 US patents credited to Cheshire
personnel)*

Expertise & Skills

- **Digital Logic Design**
- **Microprocessor Design**
- **CPLD/FPGA/ASIC Design**
- **Signal Processing**
- **A/D and D/A Data Conversion**
- **Analog Design**
- **Video**
- **Embedded Systems**
- **Real-time Systems**
- **Microcontroller Programming**
- **Windows/GUI Software**
- **System Software**
- **Device Drivers**
- **C/C++**
- **Perl**

What is Cheshire Engineering?

Cheshire Engineering is a consulting firm providing electronics and computer design engineering expertise in video processing, embedded real-time systems, microprocessor controllers, signal processing, and systems software and drivers. Cheshire has been providing these services since 1982 to numerous satisfied clients.

How can Cheshire Engineering help me?

Are you looking for engineering personnel but haven't found the skills that are required? Do you need engineering services performed on a one-time basis? Are you experiencing a temporary "crunch" that needs to be smoothed out? Do you have an idea for a product, but are not interested in maintaining a full-time engineering staff? Cheshire Engineering exists to provide engineering expertise to companies in all these situations.

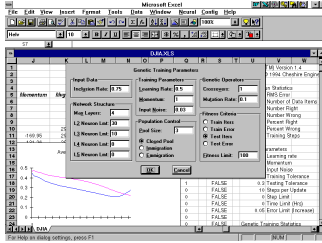
It is always difficult to find good technical people and hiring can be a risky and expensive proposition for an employer. Cheshire Engineering is able to provide expert knowledge and skills on an "as-needed" basis with quick availability and low risk.

How do I work with Cheshire Engineering?

Cheshire Engineering works the way you want to work, whether the job requires a week or a year. For those clients who are supplementing their engineering staff, Cheshire can work on site under the supervision of client personnel. For those clients who are interested in full design engineering services, Cheshire can work at its own facilities and deliver finished prototypes. Virtually any arrangement in between these two extremes is possible.

For projects that are open-ended or without firm specifications, Cheshire Engineering can provide services on a time and material basis. For projects that are self-contained and well-specified, Cheshire can provide services on a time and material or fixed price basis.

Cheshire Engineering maintains facilities to perform electronic and computer design engineering services including computer systems, CAD/EDA tools, and software development tools. In certain cases, customer provided tools and equipment may be appropriate or necessary.



Windows/Mac Neural Network program written by Cheshire

Specialty Areas

- **Digital and Analog Video**
- **Video Resolution Conversion**
- **Data Acquisition**
- **Microprocessor Controllers**
- **Embedded Real-time Systems**
- **Neural Networks**
- **Windows Platforms**
- **Unix Platforms**
- **Microprocessor Assemblers and Linkers**

Example Past Projects

- **Real-time High-Def Video Resolution Converters**
- **Video Encoders and Transcoders**
- **Solid-state Video Recorder**
- **Water Purity Monitor and Controller**
- **Electric Bicycle Motor Controller**
- **3-D Acoustic CAD Windows Program**
- **Neural Network Program for Windows and Mac**
- **Recording Studio Automation Software**
- **Test Software for Mobil Voice Recognition System**

Who am I getting when I work with Cheshire?

Cheshire Engineering retains a staff of highly experienced engineers who have been very successful in developing products and completing projects. Cheshire Engineering staff includes systems engineers, hardware engineers, software engineers, and support personnel. Currently, nearly all Cheshire engineers are graduates of the California Institute of Technology (Caltech). Some Cheshire engineers hold patents, and all have many years experience and numerous projects to their credit.

Aren't consulting engineers expensive?

An employee is often more expensive than expected after benefits, overhead, and other expenses are considered. A consultant is often less expensive than expected after the ability to retain the consulting engineer only as needed is considered, and is often more valuable due to experience level and expertise. Further, today's rapid product cycles and competitive markets means that a failure to bring a product to market in a timely manner can be very costly to a company.

Who owns the rights?

Again, Cheshire Engineering works the way you want to work. In most cases, all design rights are retained by you. Cheshire Engineering treats your information as proprietary and will deliver all information and documents to you at the completion of the project and support your assertion of copyrights and patent rights. In some cases, it may be beneficial for Cheshire Engineering to share or retain intellectual property rights. Such cases are always with the approval of the client.

How do I contact Cheshire Engineering?

Contact Cheshire Engineering by phone at (626) 351-5493 or by Email at the Internet address Inquiry@CheshireEng.com. Additional information is also available on our web page: <http://www.CheshireEng.com/>.

Cheshire Engineering will then work with you to understand your requirements and to establish our match to your requirements in an initial phone consultation. Having established a foundation for further discussions, Cheshire Engineering will meet with you at your convenience to describe our track record and skills, further understand your needs, and begin the process of building a relationship. Following that meeting, a quotation for services can be submitted for your approval.

Why the Cat?

When Cheshire Engineering began operations, there were hundreds of companies that named themselves partly with a "micro", "soft", or "tech." Choosing to be more creative and a bit whimsical, one of the founders suggested a name from a favorite character in the Lewis Carroll stories.

